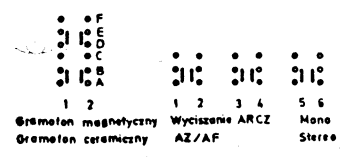
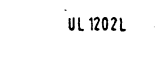
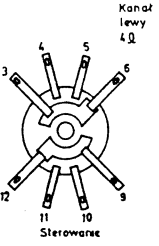
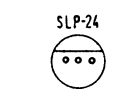
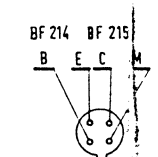
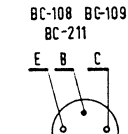
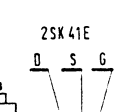
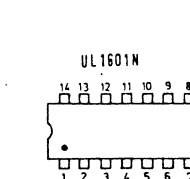


Rys. 20a: Schemat ideowy odbiornika radiowego ELIZABETH HI-FI typ DSH-102



1 Napięcia pomierzono woltmierzem o rezystancji wewnętrznej 20kΩ/V
 2 Napięcia na OS-9 UL1501N podane dla pracy stereo



Zakres częstotliwości
 Df: 150kHz + 285 kHz
 Sr: 525 kHz - 1605 kHz
 Kr I: 5,95 MHz - 9,775 MHz
 Kr II: 117 MHz - 15,45 MHz
 UKF: 65,5 MHz - 73 MHz

Częstotliwości strojenia
 Dc: 160 kHz; 280 kHz
 Sr: 560 kHz; 1500 kHz
 Kr I: 6,075 MHz; 9,638 MHz
 Kr II: 118 MHz; 16,275 MHz
 UKF: 65 MHz; 73,5 MHz

Częstotliwość strojenia
 FM - 10,7 MHz
 AM - 465 kHz

Zmiany zaszyte