

Service Manual
STEREO AMPLIFIER
SA-8800

 PIONEER

MODEL SA-BB00 COVERED IN FIVE VERSIONS Distinguished AS FOLLOWS:

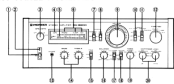
Part	Version	Remarks
401	1000-000	U.S.A. model
402	1000-001	Canada model
403	1000-002	Korea or Chinese model
404	1000-003, 1000-004 and 1000-005	U.S. Military model
405	1000-006, 1000-007 and 1000-008	General export model

The variation in table, paragraph or different description for any component part shown in cover table and this document, are applicable to the SA-BB00. For assembly of the other cover plate refer to the additional service manual.

CONTENTS

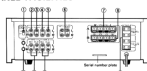
1. INTRODUCTION	1	1.1.1. Introduction Assembly (SAB-BB01)	10
2. FRONT PANEL FACILITIES	4	2.1.1. Power Jack Assembly (SAB-BB04)	45
3. REAR PANEL FACILITIES	7	3.1.1. Power Supply Assembly (SAB-BB05)	42
4. SLIDE SWITCHES	8		
5. SERVICE IDENTIFICATION	8		
6. PROTECTIVE DEVICES	10		
7. PARTS LOCATION	14		
8. IDENTIFICATION	14		
9. ADJUSTMENTS	16		
10. MAINTENANCE	16		
11. SERVICE TO OPERATORS BY BOARD	20		
12. ELECTRICAL AND PARTS LIST	20		
13. IDENTIFICATION	24		
14. IDENTIFICATION PROGRAM	24		
15. P.C. Board Connector Program	27		
16. Terminal Assembly (SAB-BB01)	31		
17. Back Assembly (SAB-BB02)	31		
18. ID Assembly (SAB-BB03)	31		
19. Front Assembly (SAB-BB04)	31		
20. IC Assembly (SAB-BB05)	34		
21. VIF Assembly (SAB-BB06)	36		
22. VIF Assembly (SAB-BB07)	36		
23. VIF Assembly (SAB-BB08)	36		

2. FRONT PANEL FACILITIES



- POWER SWITCH**
The power switch is used to supply power to the amplifier. When set to a position which is to the left of OFF, the amplifier will operate. The lamp indicator to indicate the condition under which a condition is provided when the power is set and
- POWER SELECTOR**
When the power switch is set to ON, this lamp indicates whether the amplifier is turned on.
- SPEAKER SELECTOR**
This selector is used to select the speaker system.
A) Select the speaker system.
B) Select the speaker system.
C) Select the speaker system.
D) Select the speaker system.
- HIGH FILTER SWITCH**
The high filter switch is used to filter the audio signal. When set to the ON position, the high filter is active. When set to the OFF position, the high filter is inactive.
- BUILT-IN SPEAKERS**
The built-in speakers are used to provide sound output. They are located on the front panel of the amplifier.
- VOLUME CONTROLS**
The volume controls are used to adjust the volume of the audio signal. They are located on the front panel of the amplifier.

3. REAR PANEL FACILITIES



- Ⓞ **FRONT INTERFERENCE FILTER SWITCH**
This is used to eliminate self-excitation caused by the feedback facilities or external speakers or pickups during record playback. When the switch is set to OFF during record playback, the recorded volume will be reduced.
- Ⓞ **FRONT 2 JACKS**
Connect the variable output cords to these jacks.
- Ⓞ **FRONT 2 JACKS**
Connect your record tape deck cords to these jacks.
- Ⓞ **AUX JACKS**
Connect the front cords to these jacks.
- Ⓞ **AUX JACKS**
These are auxiliary input jacks. Connect a TV tuner or amplifier input jacks to them.
- Ⓞ **FRONT/REAR POWER AMPLIFIER**
CONNECTOR BAR
When this connector bar is disconnected from the jack, the speaker can be disconnected from the power and power amplifier. For normal use, however, it is connected.
- Ⓞ **SPEAKER TERMINALS A**
Connect your first pair of speakers to these terminals.
- Ⓞ **SPEAKER TERMINALS B**
Connect your second pair of speakers to these terminals.

- Ⓞ **GND TERMINALS**
These are the ground terminals. Connect the ground wire of the turntable, etc. to these terminals.
- Ⓞ **TAPES JACKS**
Connect the tape deck cords to these jacks. Connect the REC (Recording) jacks to the jacks on the tape deck, and the PLAY (PLAYBACK) jacks to the OUTPUT jacks.
- Ⓞ **TAPES JACKS**
Connect your record tape deck cords to these jacks. Connect the REC (Recording) jacks to the jacks on the tape deck, and the PLAY (PLAYBACK) jacks to the OUTPUT jacks.
- Ⓞ **DC OUTPUT**
These are open power outlets. Insert the power plug on the device (operational amplifier, stereo amplifier, etc.) into these outlets. The maximum power capacity which may be connected to the rear OUTPUT jacks is 200W (For the standard deck, the maximum power capacity is 100W.) The power is shared equally through three two cables (speakers) of the power outlet. The maximum power capacity which may be connected to these two outlets is 200W (For the standard deck, the maximum power capacity is 100W.)

EQ Amplifier

Fig. 11 shows the basic configuration of an equalizer. The EQ amplifier is a cascaded, active network. It consists of three amplifier stages, the first stage of which contains three parallel filter branches. The output load is a resistive impedance connected to the output of the third stage. The output impedance is not a function of frequency, and is constant to that of the load impedance. The output impedance is not a function of frequency, and is constant to that of the load impedance. The output impedance is not a function of frequency, and is constant to that of the load impedance.

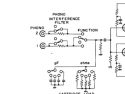


Fig. 11 EQ Amplifier

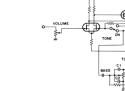


Fig. 12 Tone Control Circuit

Tone Control

Fig. 12 shows the basic tone control circuit. The tone control is a bridge network designed for the purpose of a frequency response control. It consists of a network of resistors and capacitors. The output impedance is not a function of frequency, and is constant to that of the load impedance. The output impedance is not a function of frequency, and is constant to that of the load impedance.

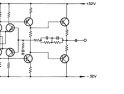


Fig. 13 EQ Amplifier

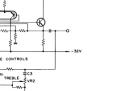


Fig. 14 Tone Control Circuit

